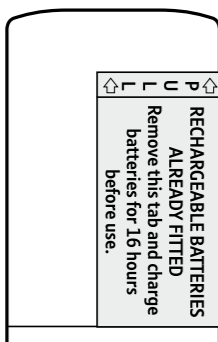


## Your BT Freestyle 335 is now ready for use.

- 1 For each additional handset and charger: plug the mains power adaptor (item code 042169) into the socket on the underside of the charger and plug the other end into the mains wall socket and switch the power on.
- 2 Activate batteries as shown above.
- 3 Place handset on the charger for 16 hours.

### Set up your additional handsets (multipacks only)

- 1 **Important:** Charge the handset batteries for 16 hours or your phone may not work.



- 1 Activate batteries by pulling the plastic tab away from the back of the handset.
- 2 Place handset on base to charge.
- 3 After 16 hours, plug the telephone line cord into the telephone wall socket.

## 2 Charge

### General information

For information on safety instructions, cleaning, technical information or connecting to a switchboard, please refer to the 'General Information' section in the full user guide at [www.bt.com/producthelp](http://www.bt.com/producthelp)

#### Guarantee

Your BT Freestyle 335 is guaranteed for a period of 12 months from the date of purchase.

Subject to the terms listed below, the guarantee will provide for the repair of, or at BT's or its agent's discretion the option to replace the BT Freestyle 335, or any component thereof, (other than batteries), which is identified as faulty or below standard, or as a result of inferior workmanship or materials. Products over 28 days old from the date of purchase may be replaced with a refurbished or repaired product.

The conditions of this guarantee are:

- The guarantee shall only apply to defects that occur within the 12 month guarantee period.
- Proof of purchase is required.
- The equipment is returned to BT or its agent as instructed.

This guarantee does not cover any faults or defects caused by accidents, misuse, fair wear and tear, neglect, tampering with the equipment, or any attempt at adjustment or repair other than through approved agents.

This guarantee does not affect your statutory rights.

For further information within and outside the 12 month guarantee, please refer to the full user guide at [www.bt.com/producthelp](http://www.bt.com/producthelp)

#### Product disposal instructions



The symbol shown here and on the product means that the product is classed as Electrical or Electronic Equipment and should not be disposed with other household or commercial waste at the end of its working life.

The Waste of Electrical and Electronic Equipment (WEEE) Directive (2002/96/EC) has been put in place to recycle products using best available recovery and recycling techniques to minimise the impact on the environment, treat any hazardous substances and avoid the increasing landfill.

#### Product disposal instructions for residential users

When you have no further use for it, please remove any batteries and dispose of them and the product as per your local authority's recycling processes. For more information please contact your local authority or the retailer where the product was purchased.

#### Product disposal instructions for business users

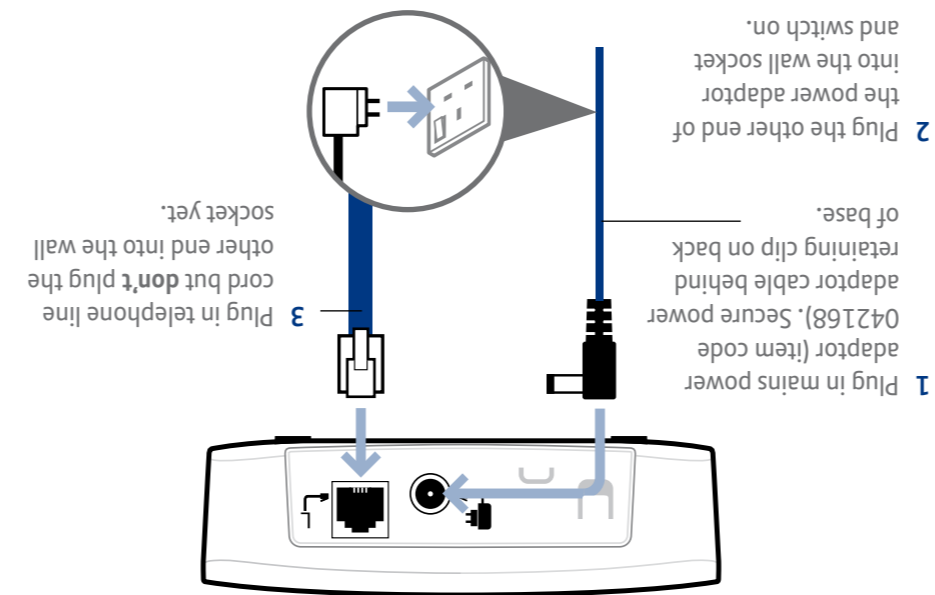
Business users should contact their suppliers and check the terms and conditions of the purchase contract and ensure that this product is not mixed with other commercial waste for disposal.

#### R&TTE Directive & Declaration of Conformity

This product is intended for use within the UK for connection to the public telephone network and compatible switchboards.

This equipment complies with the essential requirements for the Radio Equipment and Telecommunications Terminal Equipment Directive (1999/5/EC).

For a copy of the Declaration of Conformity please refer to [www.bt.com/producthelp](http://www.bt.com/producthelp)



## 1 Plug in

In order to make our products more sustainable this user guide uses less paper than our previous guides.

### BT is a sustainability leader

To find out how we're making our products greener visit

[bt.com/betterworld/products](http://bt.com/betterworld/products)

#### Offices worldwide

The services described in this publication are subject to availability and may be modified from time to time. Services and equipment are supplied subject to British Telecommunications plc's respective standard conditions of contract. Nothing in this publication forms any part of a contract.

© British Telecommunications plc 2008. Registered Office: 81 Newgate Street, London EC1A 7AJ. Registered in England No. 1800000.

Designed and produced by The Art & Design Partnership Ltd.

Printed in China / Issue 2 / ADP06-08



## BT Freestyle 335 User Guide



- 1 Plug in
- 2 Charge
- 3 Go!

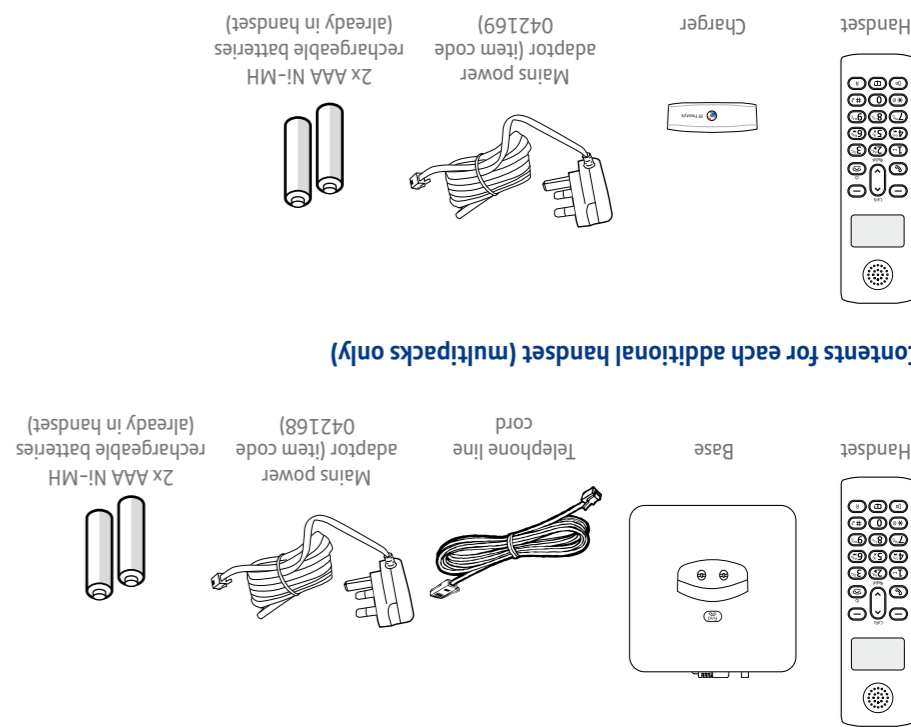


Setting up is easy. Just follow the simple steps in this guide.

If you need further assistance, please visit our website [www.bt.com/producthelp](http://www.bt.com/producthelp) to view our advanced user guide or call our helpdesk on 0800 218 2182\*

\* Calls made from within the UK mainland network are free. Mobile and International call costs may vary.

**Important:** Only use the cables and rechargeable batteries supplied in this box, or this product may not work. Any replacement rechargeable batteries must be of the same type.

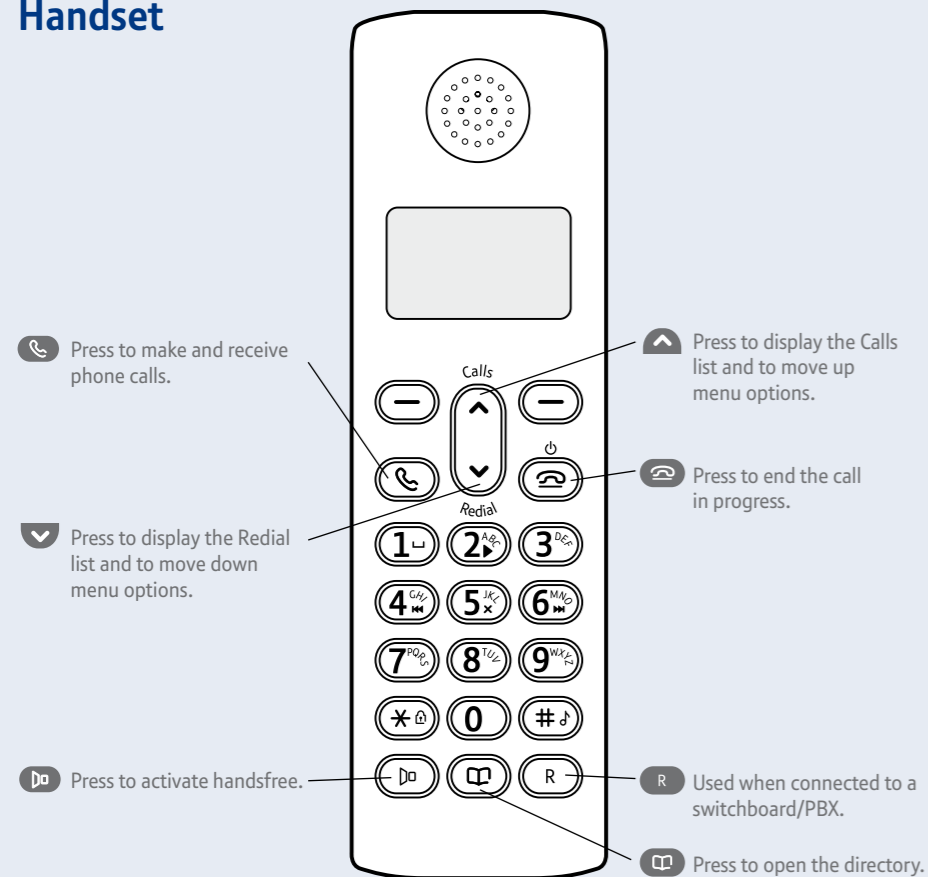


Contents for each additional handset (multipacks only)

### Check box contents

# Your phone

## Handset



## Navigating the menus

Press the left soft key (the left-hand button) to open the menu.

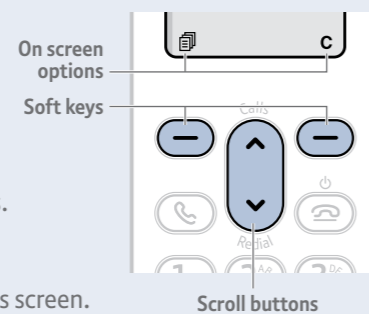
### Menu navigation

Press or to scroll through the menu options.

Press the OK left soft key to select an option.

Press the right soft key to go back to the previous screen.

Press and hold the right soft key to return to the standby screen.



## Menu map

Ans machine	Calls List	Directory	BS Settings	HS Settings	Registration	Reset
Play Message	Store Number	Add	Base Ringer	Date & Time		
Delete All	Delete	View	Ring Volume	Alarm		
Memo	Delete All	Edit	Delete HS	Ringer		
Ans On/Off	Details	Delete	Dial Mode	Tones		
Ans Settings		Delete All	Change PIN	HS Name		
		Capacity		Display		
				Auto Answer		

# 3 Go!

## Set time and date

Press left soft key (the left-hand button) to open main menu.

Press to scroll to HS SETTINGS and press OK soft key. DATE & TIME is displayed, press OK soft key.

Press to SET TIME and press OK soft key. Enter 2 digits for the hour and 2 for the minute using the 24hr format and press OK soft key. You will hear a confirmation tone.

Press, SET DATE is displayed. Press OK. Enter the day, month and year using the dd-mm-yy format and press OK. You will hear a confirmation tone.

## Making calls

Press then dial the phone number. Press to end the call.

### Answering calls

If you have subscribed to Caller Display, the caller's details will be displayed before you answer (see the full user guide online at [www.bt.com/producthelp](http://www.bt.com/producthelp) for details).

Lift the handset from the base or charger to answer incoming calls (auto talk, see below). If the handset is **not** on the base or charger, press.

### Handsfree

Press during a call to switch the call to loudspeaker.

### Secrecy (Mute)

Press the C soft key during a call to activate secrecy mode. Press the C soft key again to resume your call.

### Redial

Press. Press or to scroll through the list.

Press to redial the number displayed.

## Directory

### Storing new directory entries

Press. The first entry (or LIST EMPTY) is displayed.

Press the left soft key, ADD is displayed. press OK. NAME is displayed. Using the letters on the keypad, enter the name, then press OK. You may need to press the same button a few times until the letter you want is displayed. For example, press once for A, or twice for B. NUMBER is displayed, enter the phone number for the entry and press OK.

Press or to select a ringtone to associate with the entry and press OK to confirm. Press to return to standby.

### Dialling a directory entry

Press. Scroll or to the entry you want. Press to dial.

## Answering machine

Your answering machine is on and ready to record messages. Answering machine settings are accessed via the Ans. Machine menu, see menu map to the left.

### Recording your own outgoing message

Press the left soft key, display shows Ans Machine and press OK.

Press to scroll to Ans Settings and press OK.

Press to scroll to Outgoing Message and press OK.

Press to select either Ans & Rec or Answer Only and press OK.

Press to scroll to Recording MSG and press OK to record your message.

When prompted, speak your message into the handset. When finished press OK. Your message will be played back to you.

## Listening to your messages

When you have new messages, the icon will flash in the handset display.

Press left soft key to open main menu. ANS MACHINE is displayed, press OK.

PLAY MESSAGE is displayed, press OK to start playback. The machine announces how many messages you have and they are played back to you. The machine will then announce if there are any old messages and then these are played back.

During playback, you have the following options:

to stop playback.

once to repeat the current message, twice to play the previous message.

to skip to the next message.

to delete the current message.

Press and hold at any time to return to standby.

### Switch the answering machine on/off

Press left soft key to open main menu. ANS MACHINE is displayed, press OK.

Scroll to ANS ON/OFF and press OK.

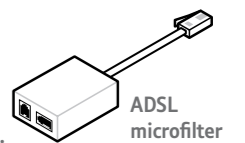
Press or to select ON or OFF, then press OK. Press and hold to return to standby.

For detailed instructions on all the answering machine features see the full user guide online at [www.bt.com/producthelp](http://www.bt.com/producthelp)

## Help

Most problems can be fixed with a few simple checks.

Problem	Solution
No dial tone	Only use the cables and batteries supplied. Make sure both the mains power adaptor cable and telephone line cord are plugged into the correct sockets.
Poor speech quality	Make sure the product is not located too close to other electrical appliances. This can also help improve the handset range from the base.
Battery icon not full/ handset dead	Make sure you charge the batteries for 16 hours before use to ensure maximum battery performance.
Using broadband on the same phone line?	Make sure you plug the phone into the wall socket via an ADSL microfilter (not supplied), otherwise you may have problems with this product and your broadband service.



## Find out more

- New Frequently Asked Questions available at [www.bt.com/producthelp](http://www.bt.com/producthelp)
- If you need more detailed instructions, a full user guide is available to download from [www.bt.com/producthelp](http://www.bt.com/producthelp)
- If you cannot find the answer to your problem in the full online user guide, then please email [bt.helpdesk@vtecheurope.com](mailto:bt.helpdesk@vtecheurope.com)
- Call the Helpline on 0800 218 2182\*