

Get striking visual effects and dynamic interactivity with DX11

ASUS Exclusive Innovations

- ASUS Exclusive **Voltage Tweak** Technology for up to 50% performance
- Factory overclocked to **915MHz** for best gaming experience



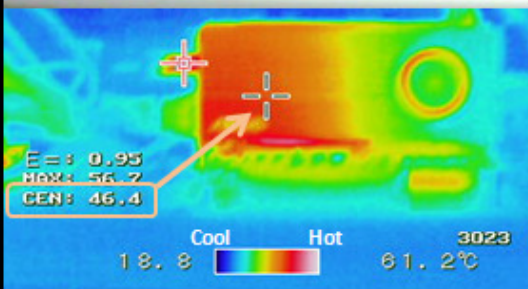
- Full **Aluminum Cover**, Lower surface temperature by **14°C**

Full Aluminum Cover

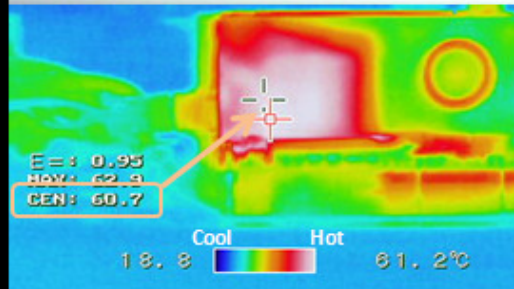
Lower Surface Temperature by **14°C !!**



ASUS EAH6870



HD 6870 Reference Card



ASUS Features

SmartDoctor

● **ASUS Smart Doctor:**
Your intelligent hardware protection and powerful overclocking tool

Gamer OSD

● **ASUS Gamer OSD:**
Real-time overclocking, benchmarking and video capturing in any PC game!

Splendid
Video Enhancement Technology

● **ASUS Splendid:**
Watching movies on PC is as good as on Top-of-the-line consumer television

1GB GDDR5

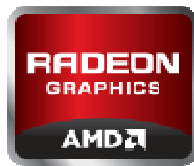
● **Gigantic 1GB GDDR5 Memory:**
On-board memory for the best gaming experience & the best resolution.

I/O Specifications

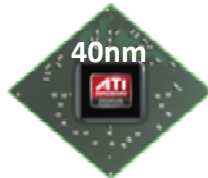
- Native Mini Display Port x 2
- Native HDMI & HDCP Compliant
- Native Dual-link DVI-I & Single-link DVI
- D-Sub (via Adaptor)



Graphics GPU Features



Radeon HD 6870



● **40nm GPU:**
Less power consumption & more efficient transistor



● **Microsoft® DirectX® 11 Support:**
Bring new levels of visual realism to gaming on the PC and get top-notch performance



● **Microsoft® Windows® 7 Ready:**
Enable PC users to enjoy an advanced computing experience and to do more with their PC



● **PCI Express 2.1 support**



● **Take Your Game Beyond HD:**
Dual-link DVI able to drive the industry's largest & highest resolution flat-panel displays up to 2560x1600



● **ATI Eyefinity Technology:**
Extend the View across 3 Displays to immerse yourself in gameplay and entertainment

Hardware Specification

Model	EAH6870/2DI2S/1GD5
Graphics Engine	ATI Radeon™ HD 6870 graphics
Video Memory	1GB GDDR5
Engine Clock	915MHz
Stream Processors	1120
Memory Clock	4200MHz (1050MHz GDDR5)
Memory Interface	256 bit
DVI Max. Resolution	2560 * 1600
RAMDAC	400MHz
Bus Standard	PCI Express® 2.1
DVI Output	1x Dual-link DVI-I 1x Single-link DVI-D
HDCP compliant	YES
HDMI Output	YES, Native
DisplayPort	YES, Native Mini Displayport x2
D-Sub Output	YES(Via Adapter)
Software Bundled	ASUS Utilities & Driver
Note	The card size is 9.5 inches x 5 inches

- Specifications are subject to change without notice.
- PCB color and bundled software versions are change without notice.
- Brand and product names mentioned are trademarks of their respective company.

